

## RJI RJ45 4-port jack Cat.5 THT angled

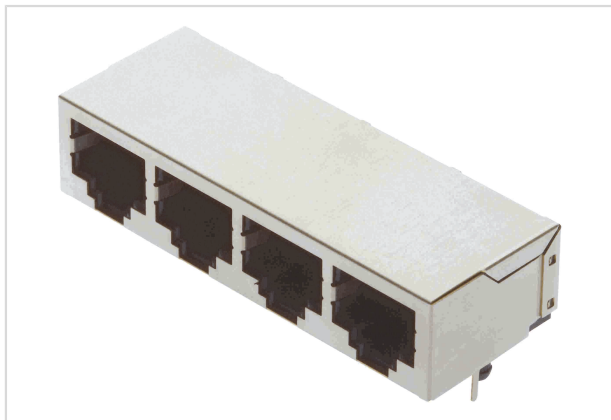


Image is for illustration purposes only. Please refer to product description.

Part number	09 45 551 1124
Specification	RJI RJ45 4-port jack Cat.5 THT angled
HARTING eCatalogue	<a href="https://b2b.harting.com/09455511124">https://b2b.harting.com/09455511124</a>

### Identification

Category	Connectors
Series	HARTING RJ Industrial®
Element	Female
Specification	RJ45
	Angled
	4 ports

### Version

Termination method	Wave soldering termination
Shielding	Fully shielded, 360° shielding contact
Number of contacts	8

### Technical characteristics

Rated current	1.5 A
Rated voltage	125 V
Transmission characteristics	Cat. 5 Class D up to 100 MHz
Data rate	10 Mbit/s
	100 Mbit/s
	1 Gbit/s
	2.5 Gbit/s
Limiting temperature	-40 ... +85 °C
Mating cycles	≥750
Degree of protection acc. to IEC 60529	IP20



Pushing Performance  
Since 1945

## Material properties

RoHS	compliant
ELV status	compliant
China RoHS	e
REACH Annex XVII substances	Not contained
REACH ANNEX XIV substances	Not contained
REACH SVHC substances	Not contained

## Specifications and approvals

Approvals	DNV GL
UL / CSA	UL 1977 DUXR2.E254191 CSA-C22.2 No. 182.4, No. 233-09 DUXR8.E254191

## Commercial data

Packaging size	60
Net weight	20 g
Country of origin	Taiwan
European customs tariff number	85366990
GTIN	5713140061590
eCl@ss	27460201 PCB connector (board connector)